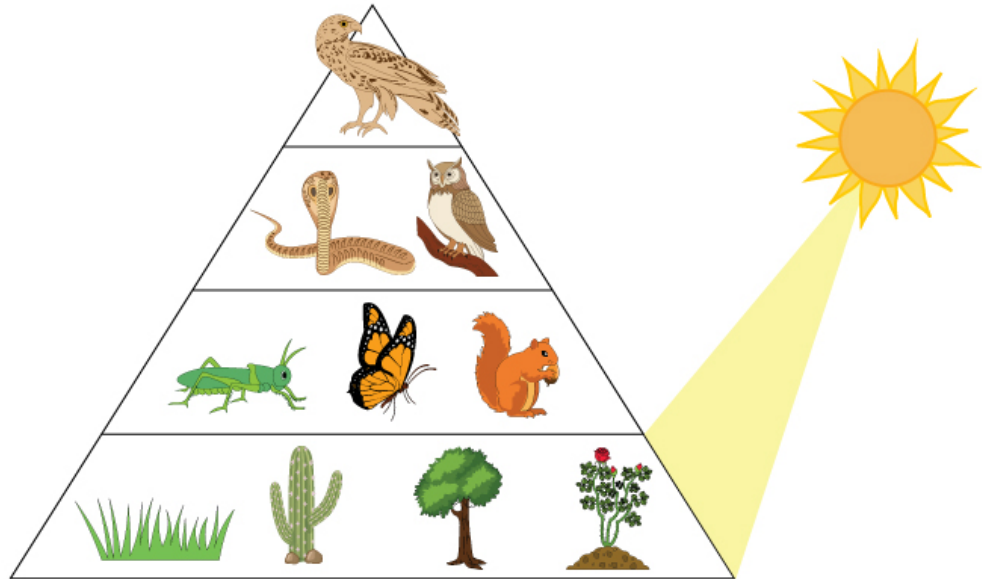


Name: _____ Date: _____

Energy Pyramid Practice

Study the ecological pyramid and answer the following questions.



Q1) Which trophic level in the pyramid contains organisms of the plant kingdom?

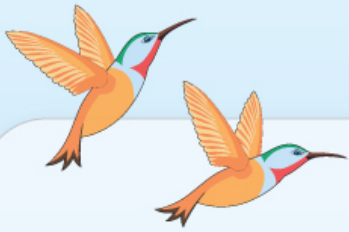
Q2) What is the energy pyramid's primary energy source?

Q3) What are animals with no natural enemies called? Give two examples.

Q4) How does the amount of available energy change at each trophic level?

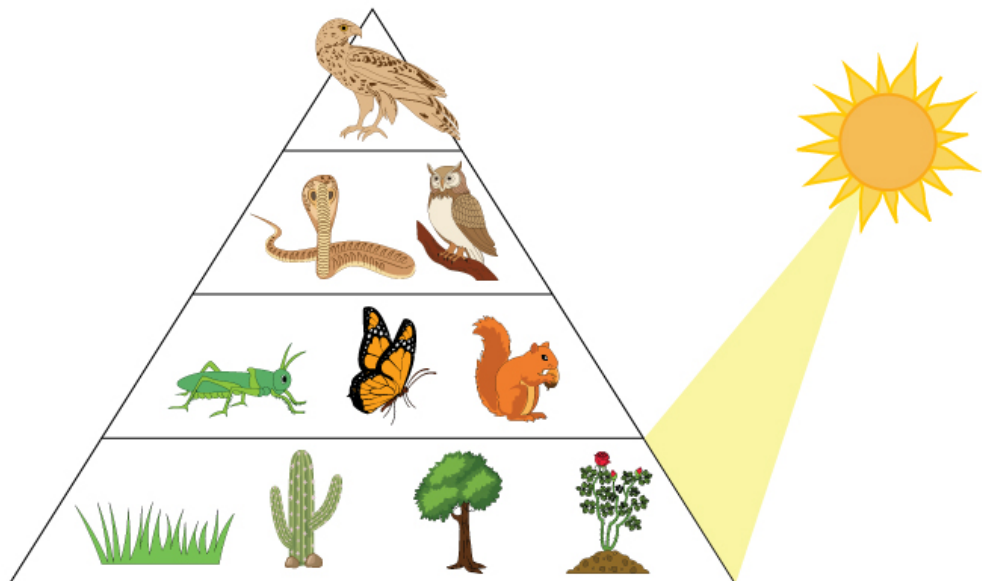
Q5) Which two trophic levels would transfer the most available energy?

Q6) Which trophic level contains the herbivores?



Name: Date:

Energy Pyramid Practice



Q1) Which trophic level in the pyramid contains organisms of the plant kingdom?

First trophic level.

Q2) What is the energy pyramid's primary energy source?

Sun.

Q3) What are animals with no natural enemies called? Give two examples.

Apex predators or quaternary consumers. Hawk and polar bear.

Q4) How does the amount of available energy change at each trophic level?

The energy at each trophic level decreases as it moves through an ecosystem.
Only 10 percent of the energy at any trophic level is carried forward to the
next level. The remaining is lost mainly through metabolic processes and heat.

Q5) Which two trophic levels would transfer the most available energy?

Producers and primary consumers.

Q6) Which trophic level contains the herbivores?

Second trophic level.